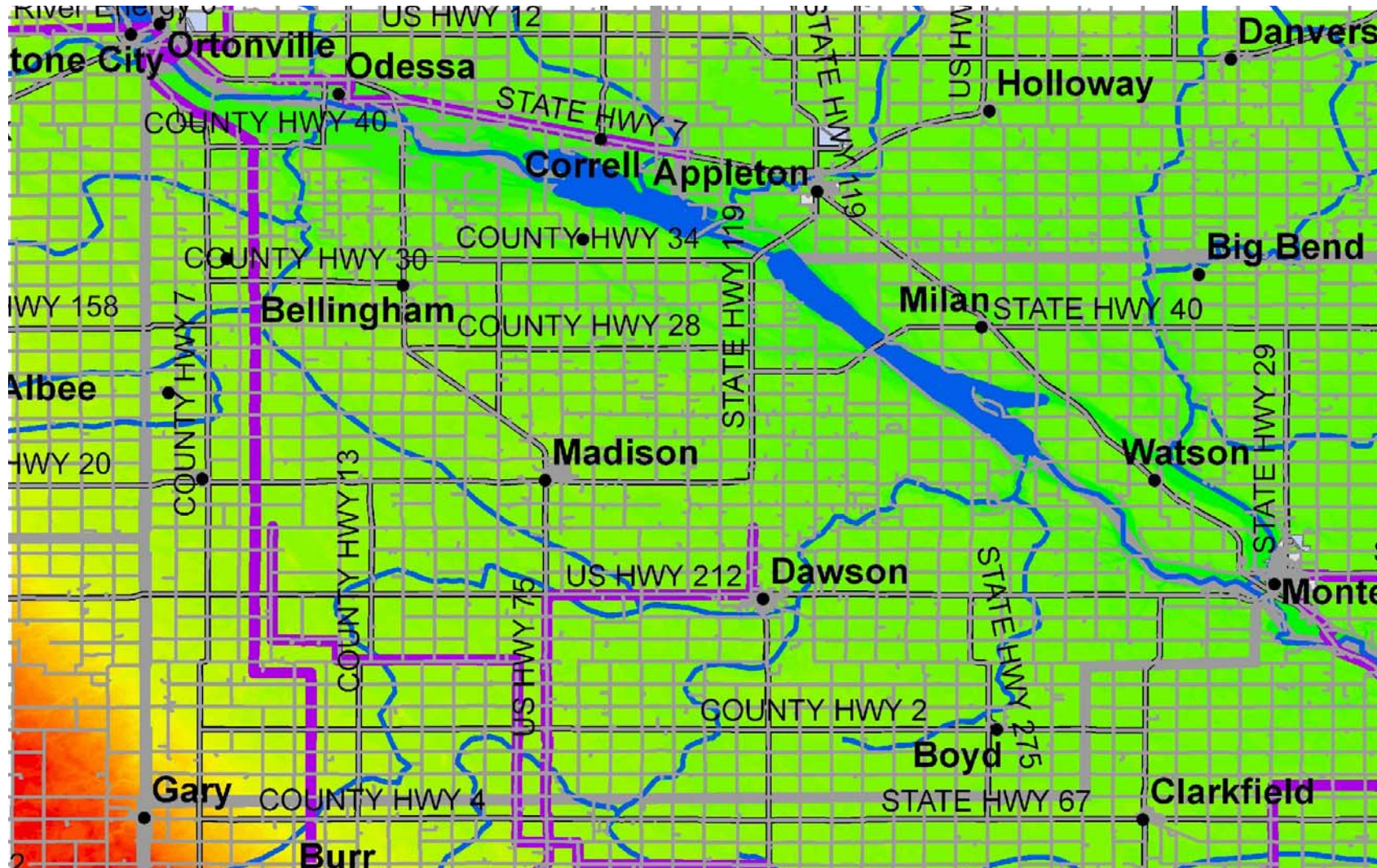


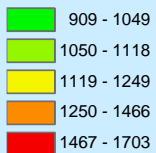
# Lac Qui Parle County Topography

*Farming the Wind: Identifying "Best Bet" Locations for Wind Turbines*



## Legend

Elevation  
(ft.)



### Rules of Thumb for "Best-Bet" Locations

- High elevation
- Relatively unobstructed fetch conditions
- Close proximity to existing transmission lines and substations to facilitate connection to grid OR proximity to large existing load
- Existing transmission lines have capacity for additional power

Location of electrical transmission lines > 60 KVA provided by Land Management Information Center, St. Paul, MN.

