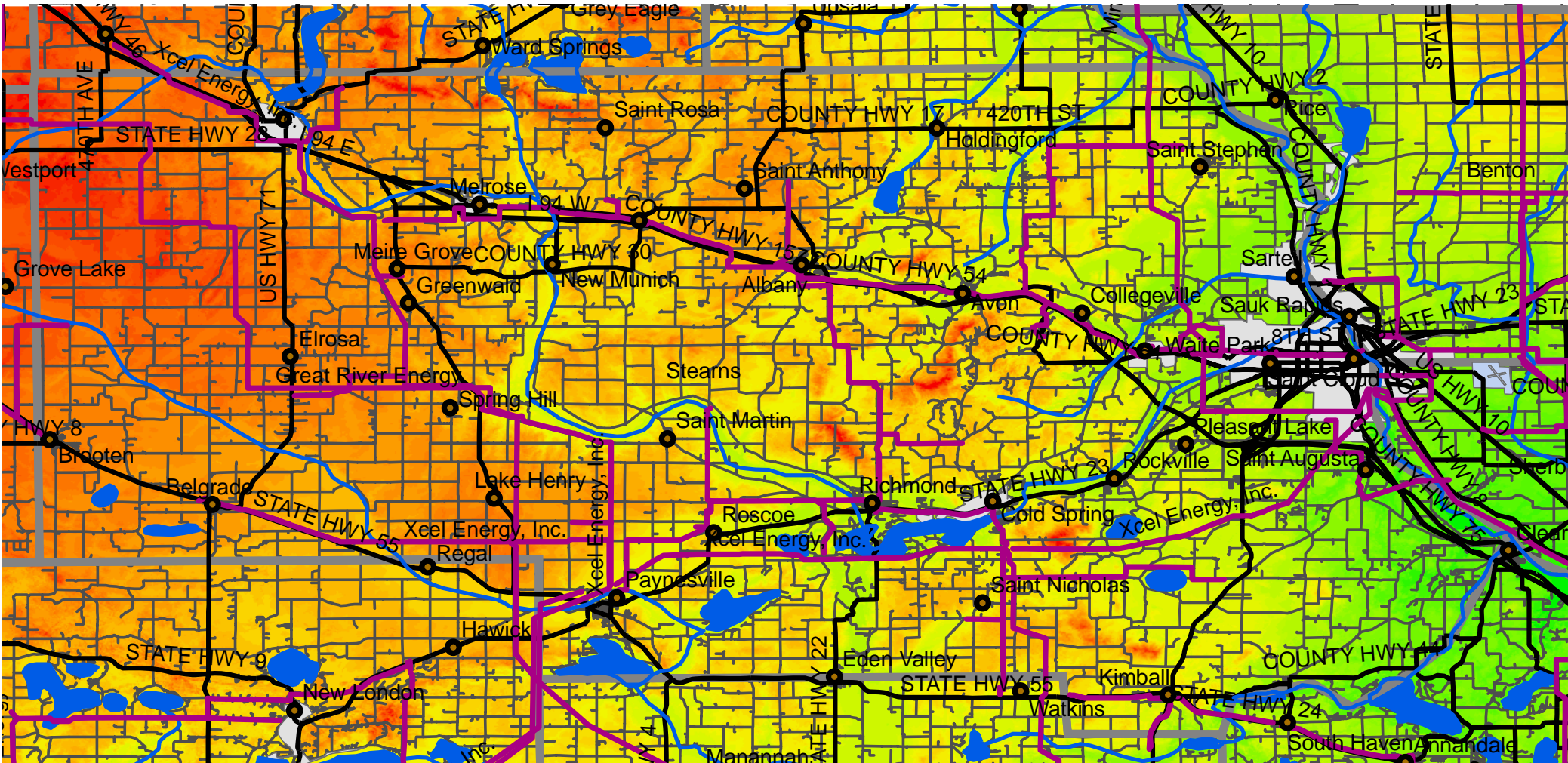


Stearns County Topography

Farming the Wind: Identifying "Best Bet" Locations for Wind Turbines



Legend	
Elevation (ft.)	
	929 - 1066
	1067 - 1145
	1148 - 1217
	1218 - 1286
	1287 - 1463

USDA Agricultural Research Service
North Central Soil Conservation Research Laboratory
 Morris, MN

- Rules of Thumb for "Best-Bet" Locations**
- High elevation
 - Relatively unobstructed fetch conditions
 - Close proximity to existing transmission lines and substations to facilitate connection to grid OR proximity to large existing load
 - Existing transmission lines have capacity for additional power



UNIVERSITY OF MINNESOTA **West Central Research & Outreach Center**

Location of electrical transmission lines > 60 KVA provided by Land Management Information Center, St. Paul, MN.