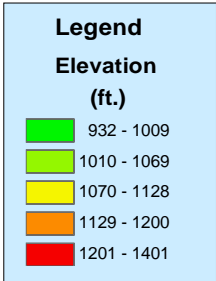
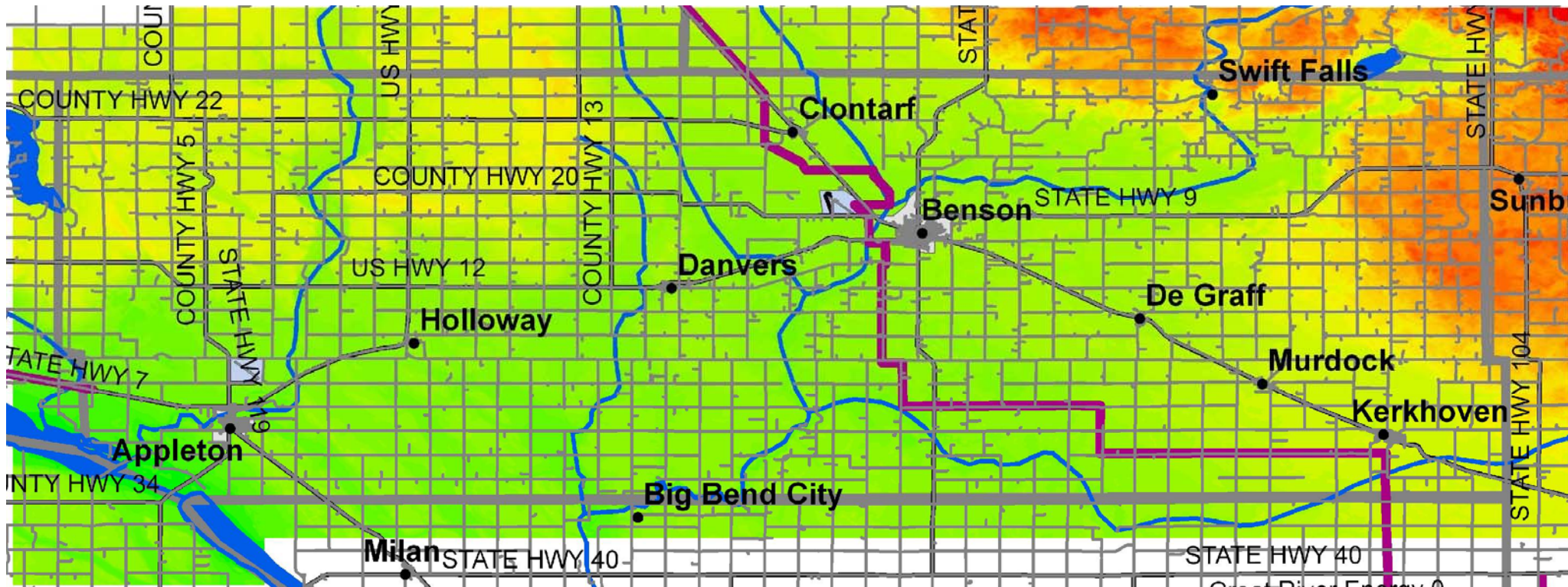


# Swift County Topography

*Farming the Wind: Identifying "Best Bet" Locations for Wind Turbines*



- Rules of Thumb for "Best-Bet" Locations**
- High elevation
  - Relatively unobstructed fetch conditions
  - Close proximity to existing transmission lines and substations to facilitate connection to grid OR proximity to large existing load
  - Existing transmission lines have capacity for additional power

Location of electrical transmission lines > 60 KVA provided by Land Management Information Center, St. Paul, MN.



**MN Clean Energy Resource Teams**