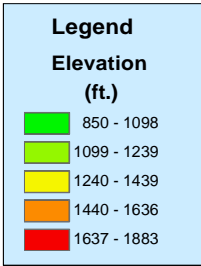
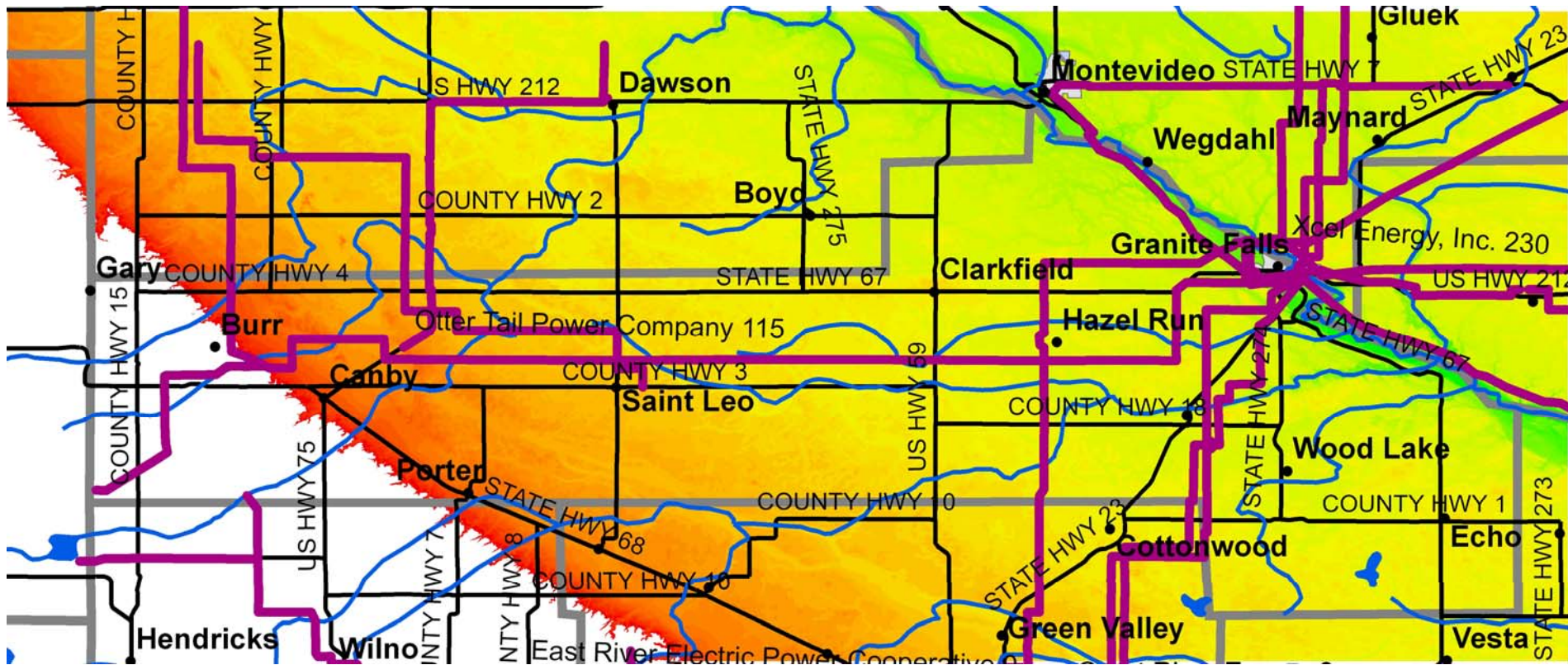


Yellow Medicine County Topography

Farming the Wind: Identifying "Best Bet" Locations for Wind Turbines



- Rules of Thumb for "Best-Bet" Locations**
- High elevation
 - Relatively unobstructed fetch conditions
 - Close proximity to existing transmission lines and substations to facilitate connection to grid OR proximity to large existing load
 - Existing transmission lines have capacity for additional power



Location of electrical transmission lines > 60 KVA provided by Land Management Information Center, St. Paul, MN.